



an AmesburyTruth™ company

Classic Series Basement Doors



Build a Better Basement

Now Available with Factory Applied Powder Coat Finish

BILCO Classic Series steel basement doors are now offered with a factory-applied polyester powder coat finish. The polyester resin provides a durable, weather-resistant coating. Cured at higher temperatures than most wet coatings, the result is a tougher and chip-resistant coating, providing both a decorative and protective finish.



Product Features

- Easy to Operate... Gas Spring lift assistance provides smooth, easy, one-hand operation and prevents the doors from slamming closed.
- Weathertight... Sheds water, keeps areaway dry and free of debris.
- Rugged... Heavy gauge steel and sturdy concealed hinges ensure all-season operation and lasting service.
- Secure... Slide bolt lock and internal mounting flanges make your home safe and secure. (Keyed lock kit available)

Experience. Innovation.

800-854-9724 | WWW.BILCO.COM



Log on to www.BILCO.com to find a sales representative near you.



Classic Series Basement Door

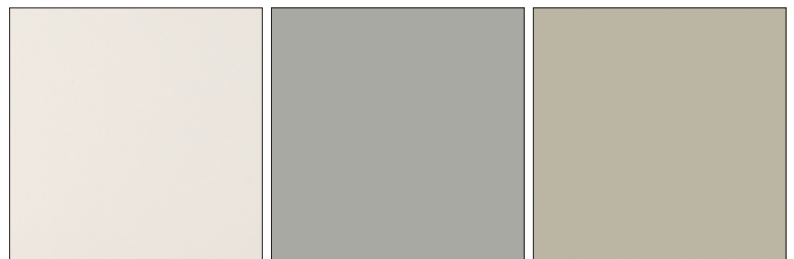


Matching foundation plates with a powder coat finish are now available

Eliminates the time and expense required by the homeowner to paint the door after it is installed

Advantages & Standard Features:

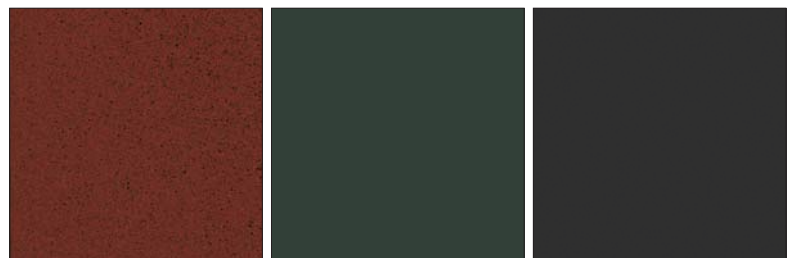
- Offered in six standard colors (see chart on right) with a textured finished
- Available on our most popular steel sided doors, sizes B and C, and extension panels
- Offers a superior finish to conventional paint
- Makes the BILCO door durable, attractive and extremely scratch-resistant
- Is ideal for exterior applications
- Retains exterior color longer
- Process is environmentally friendly and virtually pollution-free



White

Light Gray

Sandstone



Brick

Green (New)

Black (New)

Due to the printing process, colors shown approximate as close as possible to the actual paint colors.