



DOORS FOR SPECIAL SERVICES

***Introducing...  
The Bilco PCM  
Pit and Vault Door***



***The Door Designed  
with the  
Precaster in Mind...***

## Quick, easy installation for you...

As a precaster, you are concerned with installation time. You're also concerned with giving your customers the smooth, easy operation a Bilco door provides. The new PCM does both. Installation is easier than 1, 2, 3. Just forget 2 and 3. Put the door in place on the form and make your pour. No fuss. No bother. No special forming required. The PCM frame provides the form for you.



**Frame depth designed to match slab thickness**

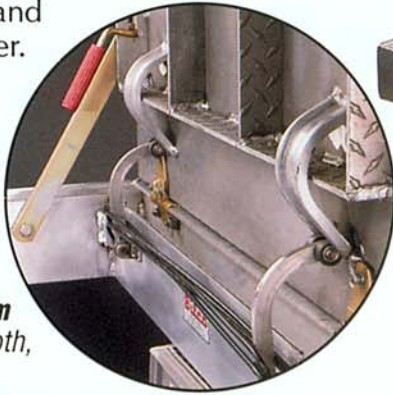


*The PCM Torsion/Cam design provides ease of operation through the entire arc of opening, and for safety acts as a check in retarding downward motion of the door.*

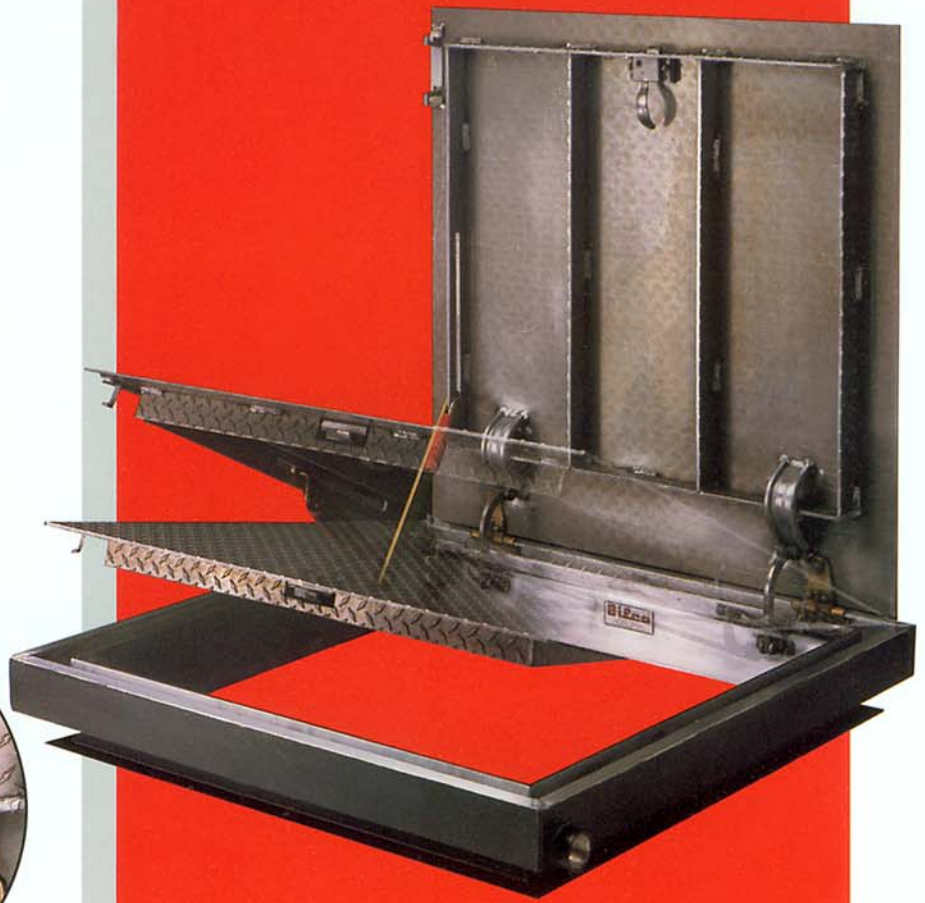
# Unmatched performance for your customer

The new PCM Torsion/Cam design assures your customers of a superbly balanced door through the entire arc of opening and closing, a most important safety and convenience feature. And customers will like the way the PCM door is designed to provide long, trouble-free service.

Quick, hassle free installation. Long service life. Smooth, easy operation. An unbeatable combination for both you and your customer.



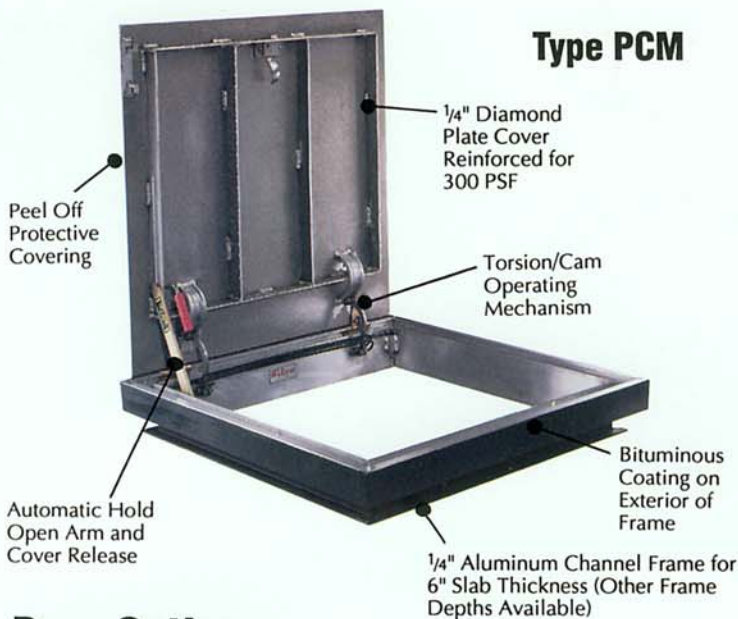
**New Torsion/Cam System** for smooth, easy operation.



Bilco doors feature a covering for protection during the pouring process. ▶



▶ PCM door shown with Bilco LadderUP Safety Post for easier, safer ladder use.



### Specifications Type PCM and Type PDCM\*

Access door shall be Type \_\_\_\_\_ as manufactured by The Bilco Company, New Haven, CT 06505. Door leaf shall be 1/4" aluminum 6061-T6 diamond pattern plate to withstand a live load of 300 pounds per square foot. The frame shall be 1/4" extruded aluminum 6063-T5 channel shaped to provide a drainage gutter and an overall depth of 6" for a 6" concrete slab thickness. (Specify desired frame depth if not 6" .) A 1 1/2" pipe coupling shall be provided on the exterior vertical leg of the frame at the front right corner. Door(s) shall be equipped with heavy forged brass hinges with stainless steel pins and fasteners. A Type 316 stainless steel snap lock with removable handle shall be provided.

A stainless steel torsion bar mechanism, acting through cams, shall provide ease of operation through the entire arc of opening, and for safety act as a check in retarding downward motion of the door(s).

A heavy steel automatic hold open arm shall include a red vinyl grip for handy release. Arm shall be zinc plated and chromate sealed.

Aluminum shall be mill finish with bituminous coating applied to the exterior of the frame. Manufacturer shall provide peel off protective covering on the top surface of the door leaf and frame. Installation shall be in accordance with manufacturers instructions. Manufacturer shall guarantee against defects in material or workmanship for a period of five years.

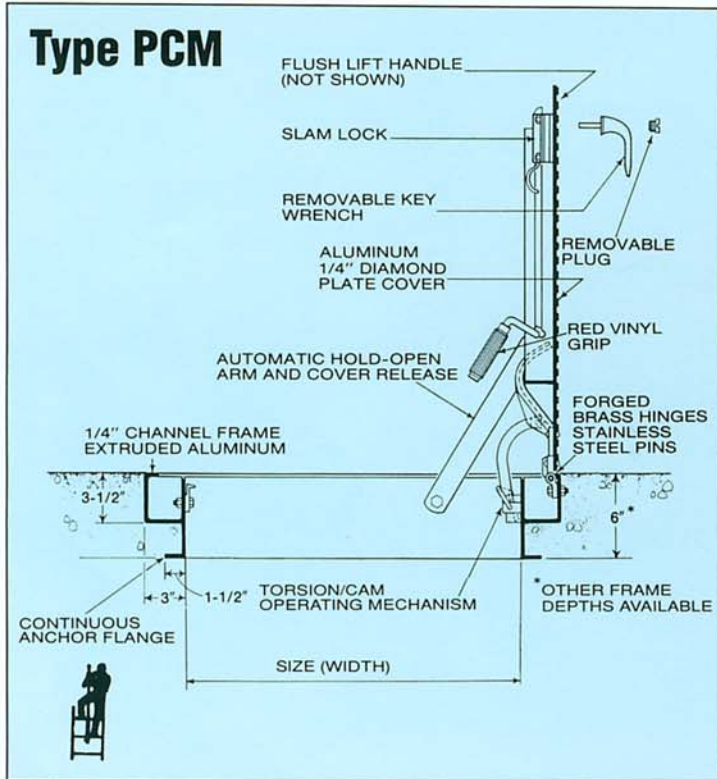
## Door Options

### Locking and Latching Devices

Standard is a flush spring loaded snap lock operable from the outside by a removable handle and from below by a fixed turn handle. Locking and latching options are: a recessed padlock hasp covered by a hinged lid flush with surface, a cylinder lock with keyway protected by a threaded cover plug, lugs welded to the exterior door surface to receive a padlock, and a hinged padlock hasp on the exterior door surface.

### Stainless Steel Hardware

For installation in a highly corrosive environment, specify Type 316 stainless steel hinges and hold open arm. (All other hardware is stainless steel.)



Patent applied for

BILCO manufactures a broad line of quality steel and aluminum horizontal access doors, including doors reinforced for vehicle loading. All are designed and built to give your customers smooth, easy operation and long, trouble-free service. For information on the full line of BILCO pit and vault doors, ask for a copy of the "BILCO Quality Access Doors" catalog.

TYPE	SIZE		WT. LBS
	Width	Length	
PCM-1	2'0"	2'0"	68
PCM-2	2'6"	2'6"	81
PCM-3	3'0"	2'6"	91
PCM-4	3'0"	3'0"	107
PCM-5	3'6"	3'6"	156
PCM-6	2'6"	4'0"	135
PCM-7	3'0"	4'0"	153
PCM-8	2'6"	5'0"	158
PCM-9	3'0"	5'0"	169
PCM-10	3'0"	6'0"	197
PDCM-1*	4'0"	2'6"	157
PDCM-2*	4'0"	4'0"	167
PDCM-3*	4'0"	6'0"	236
PDCM-4*	5'0"	5'0"	242

\* Double Leaf

The Bilco Company, P.O. Box 1203, New Haven, CT 06505  
 Phone: (203) 934-6363, Fax: (203) 933-8478, www.bilco.com

Printed in U.S.A.

Since 1926. First in Design and Quality.

