

Experience. Innovation.

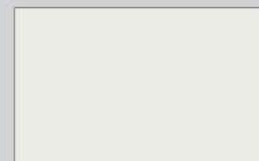
Factory Applied
Powder Coat Paint Finish



Type S-20
Roof Hatch
with Signal White finish

BILCO products are now available with a Sherwin Williams factory-applied Powdura® polyester powder coat finish. The polyester resin provides a durable, weather-resistant coating. Cured at higher temperatures than most wet coatings, the result is a tougher and chip-resistant coating, providing both a decorative and protective finish. Finish is available on all BILCO steel and aluminum products.

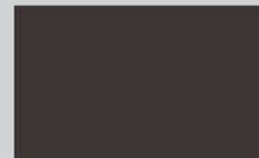
Standard Colors



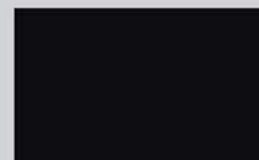
Signal White
RAL 9003
Pantone PMS 705



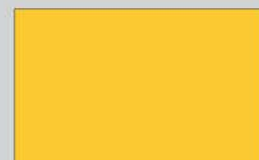
Cool Gray
RAL 7047
PMS Cool Gray 2C



Gray Brown
RAL 8019
PMS 412



Jet Black
RAL 9005
PMS Black



Zinc Yellow
RAL 1018
PMS 123

Color appearance may vary based on monitor and resolution settings.
Please verify all colors by appropriate RAL or Pantone (PMS) number.
Custom colors may also be specified.



an Amesbury Truth™ company

800-366-6530
WWW.BILCO.COM