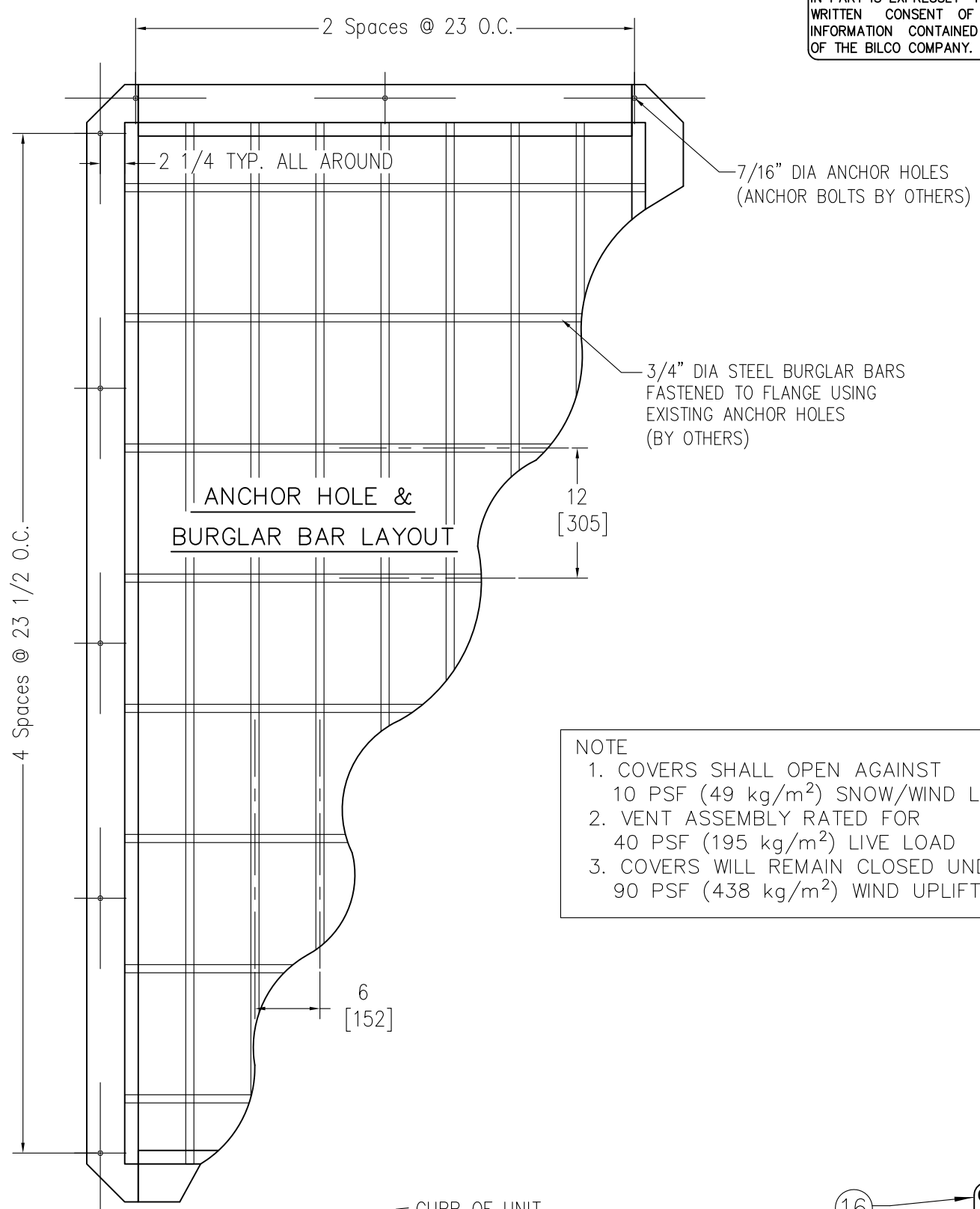
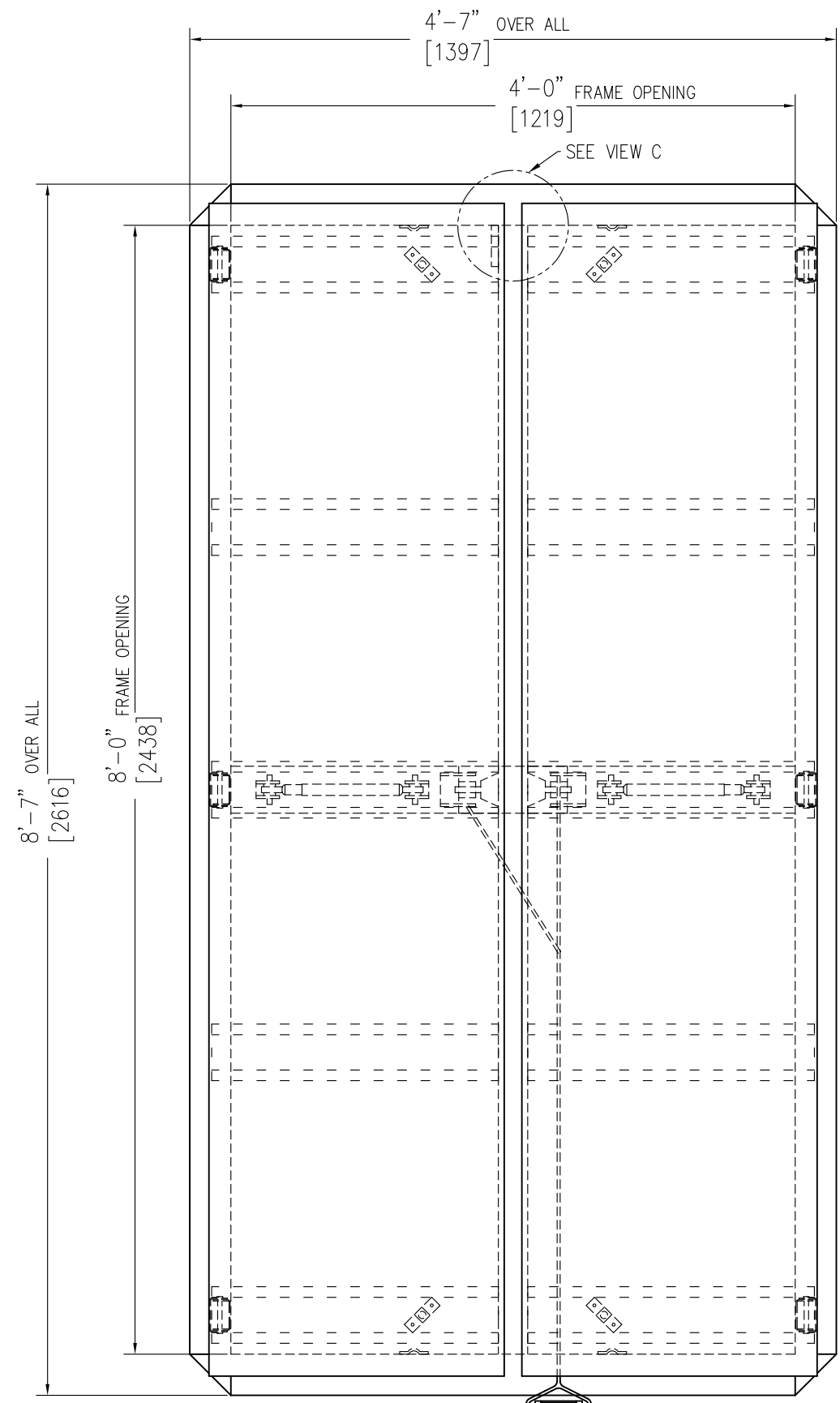


THIS DRAWING IS THE PROPERTY OF THE BILCO COMPANY AND INCORPORATES INFORMATION WHICH IS PROPRIETARY. PUBLICATION AND/OR PUBLIC DISTRIBUTION IN WHOLE OR IN PART IS EXPRESSLY PROHIBITED WITHOUT THE PRIOR WRITTEN CONSENT OF THE BILCO COMPANY. THE INFORMATION CONTAINED HEREIN REMAINS THE PROPERTY OF THE BILCO COMPANY. ALL RIGHTS RESERVED.

Sym.	Revision	Date	By



NOTE
 1. COVERS SHALL OPEN AGAINST 10 PSF (49 kg/m²) SNOW/WIND LOAD
 2. VENT ASSEMBLY RATED FOR 40 PSF (195 kg/m²) LIVE LOAD
 3. COVERS WILL REMAIN CLOSED UNDER 90 PSF (438 kg/m²) WIND UPLIFT FORCE

SPECIFICATIONS

1. Frame 14 Gauge P.B. Galv. Steel w/ intergral cap flashing (corners fully welded)
2. Cover 14 Gauge P.B. Galv. Steel
3. Cover liner 22 Gauge P.B. Galv. Steel
4. Gasket (all around frame)
5. Pintle hinge
6. Gas springs with integral damper & hold open feature
7. 1" rigid fiberboard insulation
8. Fixed center drain
9. 165° fusible link (extra link provided)
10. Thermolatch®II positive hold/release mechanism
11. Cover restraint cable
12. 1" thick fiberglass cover insulation
13. Hold open pin release
14. Pull grip to open from inside 1/8" Dia. steel cable
15. Pull grip to open from outside 1/8" Dia. steel cable
16. Cover latch bracket
17. Bilclip™ flashing system

THIS PRODUCT MAY BE INSTALLED ON EITHER A FLAT OR SLOPING ROOF. WHEN INSTALLED ON A SLOPE, THE HINGE SIDE MUST RUN PARALLEL WITH THE SLOPE. IF SLOPE EXCEEDS 30°, ADVISE FACTORY FOR MODIFICATION.

- UNIT(S) REQUIRED
- SHOP FINISH:
 COVER: RED OXIDE PRIMER
 FRAME: RED OXIDE PRIMER
 HARDWARE: ZINC PLATED & CHROMATE SEALED (UNLESS OTHERWISE SPECIFIED)

Customer: _____

P.O. N° _____

Job: _____

Builder: _____

Architect: _____

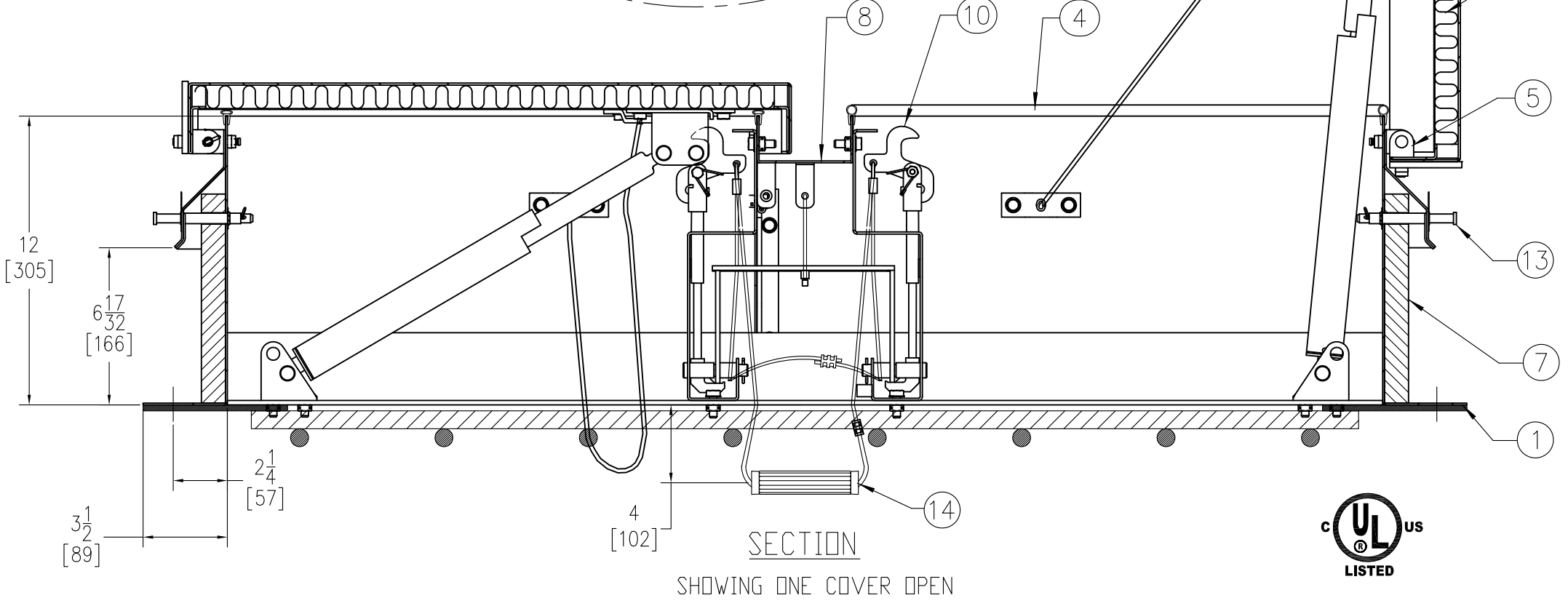
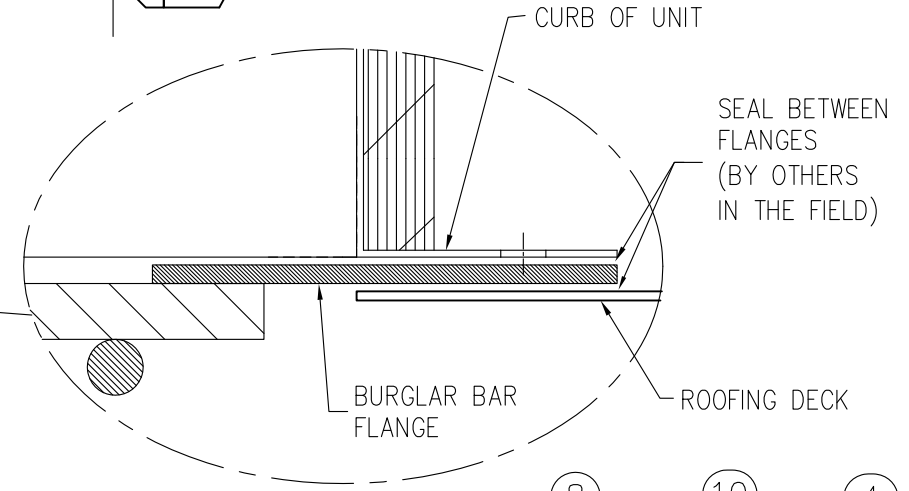
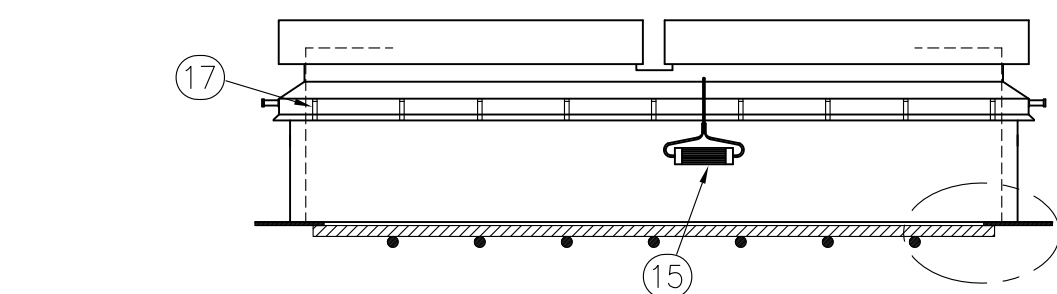
Engineer: _____

Sales Rep: _____

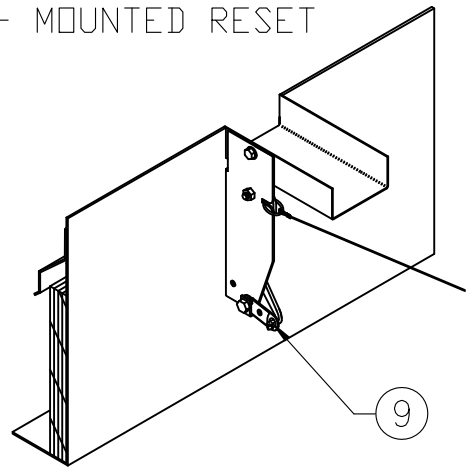
Manufacturers of Doors for Special Services
Bilco® THE BILCO COMPANY
 New Haven, Connecticut 06505

AUTOMATIC DOUBLE LEAF FIRE VENT
 TYPE DSH-4896 SIZE 4'-0" x 8'-0"

Drawn By.	Date	Drawing No.	Rev.
		DSH4896BB	
Scale DO NOT SCALE			



THERMOLATCH® II CURB - MOUNTED RESET



1. THERMOLATCH MECHANISM - COVERS WILL OPERATE ONLY WHEN ACTIVATED
 A. MANUALLY
 B. BY HEAT AT 165° FUSIBLE LINK

VIEW C

SECTION

SHOWING ONE COVER OPEN

