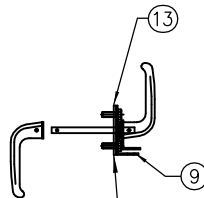
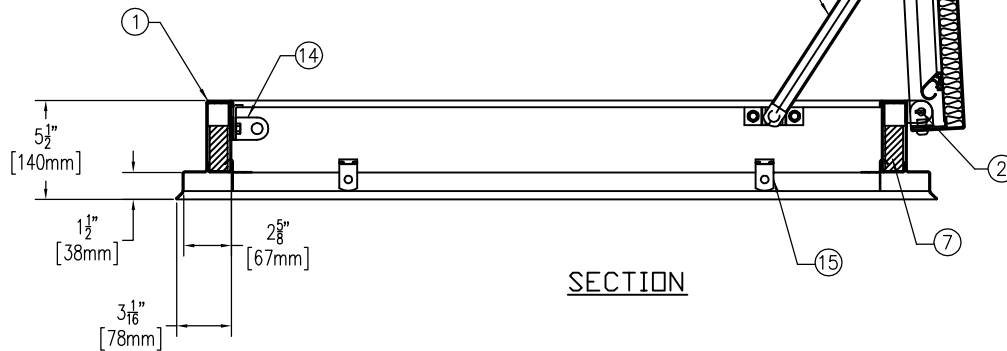
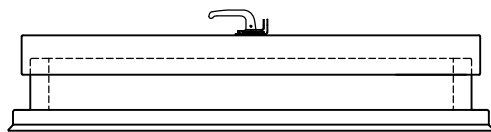
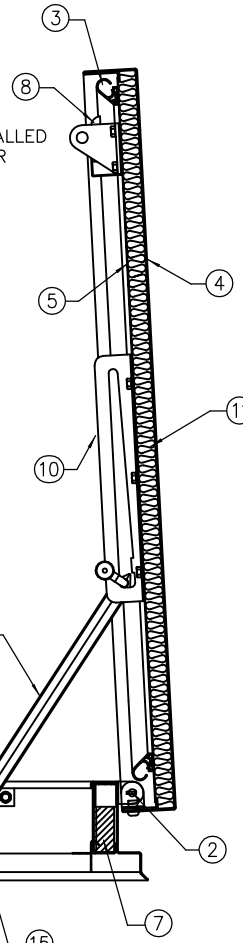
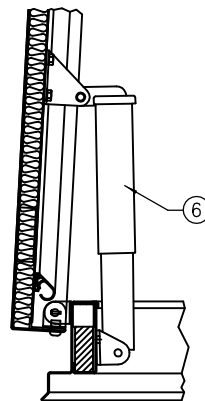


QUANTITY OF SPRINGS
AND HINGES VARIES
WITH SIZE



HANDLES TO BE INSTALLED
ON SITE BY CUSTOMER



SECTION

THIS DRAWING IS THE PROPERTY OF THE BILCO COMPANY AND INCORPORATES INFORMATION WHICH IS PROPRIETARY. PUBLICATION AND/OR PUBLIC DISTRIBUTION IN WHOLE OR IN PART IS EXPRESSLY PROHIBITED WITHOUT THE PRIOR WRITTEN CONSENT OF THE BILCO COMPANY. THE INFORMATION CONTAINED HEREIN REMAINS THE PROPERTY OF THE BILCO COMPANY. ALL RIGHTS RESERVED.

SPECIFICATIONS

1. FRAME W/ FLASHING (CORNERS FULL WELDED)
 - 20VM - 14 GAUGE GALVANNEAL STEEL
 - 50VM - 11 GAUGE ALUMINUM
2. PINTLE HINGE
3. GASKET (ALL AROUND COVER)
4. COVER GAUGE
 - 20VM - 14 GAUGE GALVANNEAL STEEL
 - 50VM - 11 GAUGE ALUMINUM
5. COVER LINER
 - 20VM - 22 GAUGE GALVANNEAL STEEL
 - 50VM - 18 GAUGE ALUMINUM
6. SPRING LIFTING MECHANISM
7. 1" RIGID FIBERGLASS INSULATION
8. SLAM LATCH
9. INSIDE AND OUTSIDE HANDLES W/ PADLOCK HASPS
10. ARM GUIDE BRACKET
11. 1" THICK FIBERGLASS COVER INSULATION
12. HOLD OPEN ARM W/ RED VINYL GRIP
13. NEOPRENE GASKET
14. LOCK STRIKE & PADLOCK HASP
15. ANCHOR TABS (QTY & LOCATION VARIES W/ SIZE)
16. GUIDE ARM (IF REQ'D)

SHOP FINISH:

- STEEL: RED OXIDE PRIMER
- ALUMINUM: MILL FINISH
- HARDWARE: ZINC PLATED/CHROMATE SEALED
(UNLESS OTHERWISE SPECIFIED)

THIS PRODUCT MAY BE INSTALLED ON EITHER A FLAT OR SLOPING ROOF. WHEN INSTALLED ON A SLOPE, THE HINGE SIDE MUST RUN PARALLEL WITH THE SLOPE. IF SLOPE EXCEEDS 30°, ADVISE FACTORY FOR MODIFICATION.

CUSTOMER:

P.O. NO.:

JOB:

TAG:

SALES REP.:

APPROVED BY:

DATE:

Manufacturers of Doors for Special Services
Bilco® THE BILCO COMPANY
New Haven, Connecticut 06505

**SINGLE LEAF ROOF SCUTTLE -
TYPE VM**

SIZE		SIZE	
QTY	TYPE	QTY	TYPE
WIDTH		LENGTH	
<input type="checkbox"/>	S-20VM	<input type="checkbox"/>	S-50VM
[914mm] x [762mm]		[914mm] x [762mm]	
<input type="checkbox"/>	E-20VM	<input type="checkbox"/>	E-50VM
[914mm] x [914mm]		[914mm] x [914mm]	
<input type="checkbox"/>	NB-20VM	<input type="checkbox"/>	NB-50VM
[762mm] x [1370mm]		[762mm] x [1370mm]	
<input type="checkbox"/>	L-20VM	<input type="checkbox"/>	L-50VM
[762mm] x [2440mm]		[762mm] x [2440mm]	
<input type="checkbox"/>	EW-20VM	<input type="checkbox"/>	EW-50VM
[1000mm] x [1000mm]		[1000mm] x [1000mm]	